

# 3 BEDROOM GARDEN RESIDENCE WITH PRIVATE POOL

PHASE 2 - 5211 - 5214

## GROSS FLOOR AREA

GROSS FOOTPRINT: 2944 - 2946 SQ FT  
APARTMENT: 2028 SQ FT  
DECK & POOL: 722 SQ FT  
GARAGE: 194 - 196 SQ FT

## INDOOR-OUTDOOR LIVING

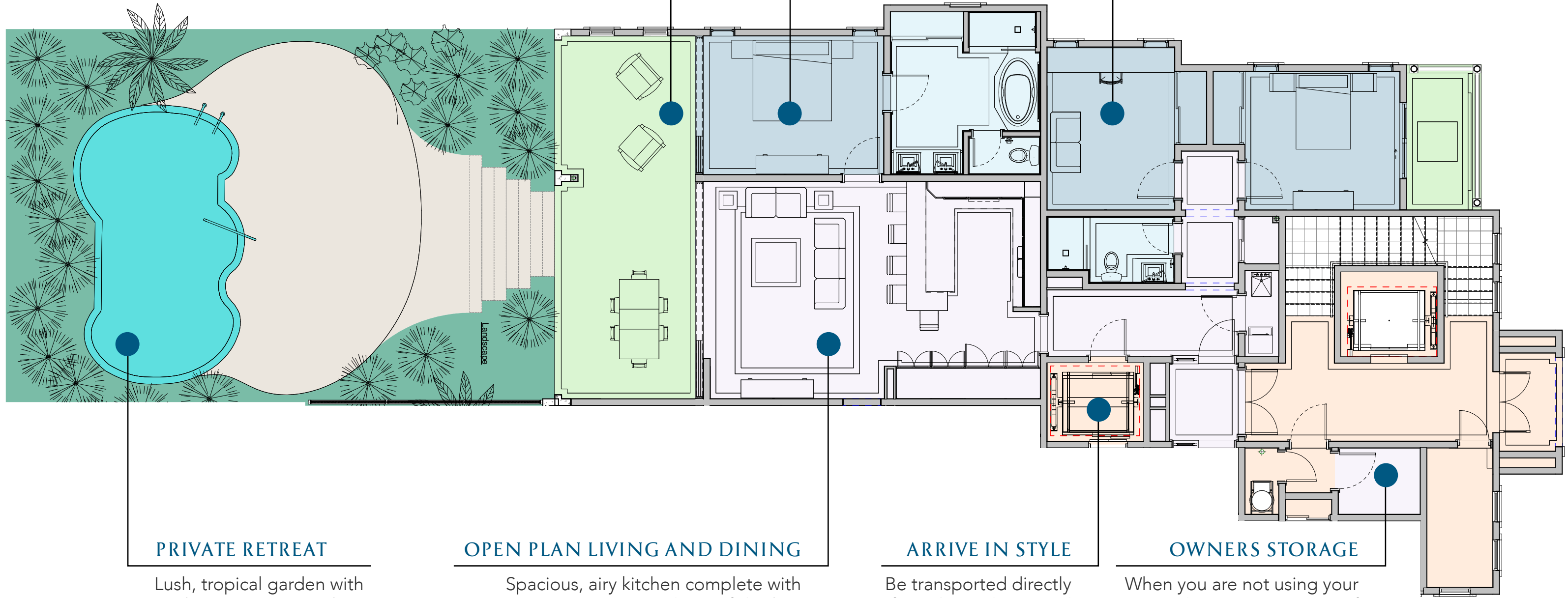
Spacious, private patios perfect for dining, lounging and entertaining

## WAKE UP TO A DREAM

Grand master bedrooms face the same dramatic views as the living spaces

## ROOM TO SPARE

Third bedroom can be conveniently converted into home office or den



## PRIVATE RETREAT

Lush, tropical garden with a relaxing private pool

## OPEN PLAN LIVING AND DINING

Spacious, airy kitchen complete with granite counter tops and top-of-the-line stainless steel appliances. The centrepiece is a split-level counter top, offering both dining and prep areas

## ARRIVE IN STYLE

Be transported directly from the underground garage, to the foyer within your residence.

## OWNERS STORAGE

When you are not using your residence, enjoy peace of mind with conveniently located storage